



# Solaris

Canopy | Bridge | Warehouse | General Lighting Indoors or Outdoors

## Unique Features

The Solaris by GreenStar is an excellent choice for canopy, warehouse, bridge, parking garage, security and other general lighting purposes. The quality high-impact Optical Grade PMMA lens can be configured to deliver consistent light coverage when mounted at various heights and locations, making this an extremely versatile fixture.

- Advanced heat dissipation technologies (same patented system used in Galaxy) for long-term reliability
- Thermally separated power supply provides additional heat management properties
- “Zero air gap” LED mounting assures thorough transfer to heat exchange surface
- Metal core printed circuit board delivers superior heat exchange
- Micro-controller based smart light
- Modular construction for ease of field maintenance
- Philips Lumiled LUXEON® Rebel LEDs rated at >60,000 hours
- Custom designed LEDIL lens delivers even light and resists impact damage
- Texas Instruments drivers and components
- Lightning and surge protection embedded
- Certifications pending: ETL (to UL standards), CE, RoHS, NOM, CSA, IDA
- Unique futuristic appearance



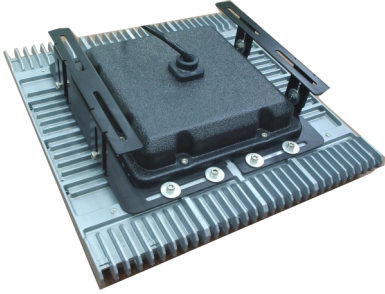
# GREENSTAR

GreenStar™ Products, Inc.,  
175 Enterprise Parkway,  
Boerne, Texas, USA 78006,  
Toll-free 1-877-877-1711, [www.greenstarled.com](http://www.greenstarled.com)

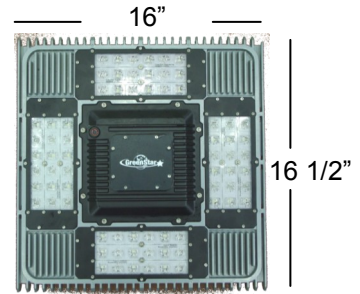
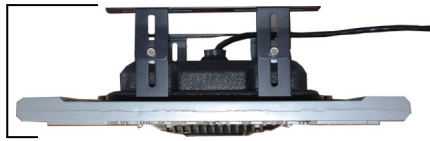


SOL48 | SOL60 | SOL72

# Solaris Technical Specifications



Adjustable  
4 1/2" to 6"



Model	SOL48	SOL60	SOL72
Number of LED	48	60	72
Typical Lumens	8,550	10,650	12,825
Power Consumption	109W	137W	164W

Electrical	
Input Line Voltage	85-300 VAC standard; 345-500 VAC optional
Frequency	50/60 Hz
Power Factor (PF)	>0.95
Surge/Spike protection	10 KV
Total Harmonic Distortion (Thd)	<10%
Forward Current	700mA
Optical	
Light Source	Philips Lumiled® LUXEON Rebel >60,000 hours
Correlated Color Temperature (Kelvin)	4,500 K to 6,000 K
Lens Design Source	LEDIL
Delivered Light Efficiency	Best Available Efficiency >90%
Beam Pattern	Security / General purpose (Type 5)
Lens Material Characteristics	High UV and Temperature resistance (105°C/220°F)
Operating Environment	
Operating temperature	-40C to +50C; -40F to +122F
Applications	Engineered to meet IP-65 standards for dust and moisture sealing
Certifications	In June 2011 will have ETL (to UL standards)
Mechanical	
Dimensions	16 in X 16.5 in (front view) X 4 1/2" to 6" (front to adjustable mount on back)
Weight	14.3 lbs/ 6.5 Kgs
Casing material	Aluminum alloy
Lens material	High-impact, Optical Grade PMMA
Thermal management	Based on patented system, passive, oversized heat sinks, medal core PCB

